

Cello

Advanced Orchestra Pass Offs

Major 2-Octave Scales

C Major



G Major



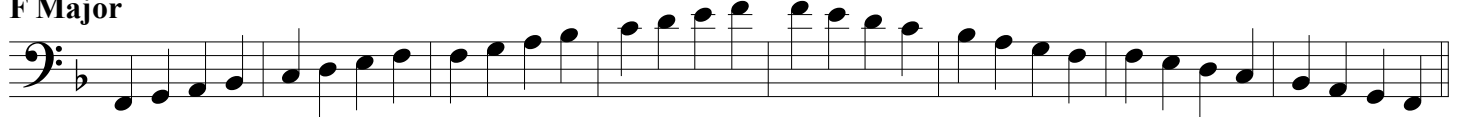
D Major



A Major



F Major



Bb Major



E Major



B Major



Eb Major



Ab Major



Db Major



F# Major



Technical Exercises

Shifting Exercise By Michael Kimber

Musical notation for the Shifting Exercise, featuring a single staff with a bass clef and a key signature of one sharp (F#). The exercise consists of a sequence of eighth notes with various fingering patterns indicated above the notes: 1-1, 1-1, 2-3, 0-3-2, 2-1, 1-3-0, and 1-2.

The Bartered Bride

Musical notation for 'The Bartered Bride', featuring a single staff with a bass clef, a key signature of three sharps (F#, C#, G#), and a 2/4 time signature. The notation includes various rhythmic values and fingering patterns such as 3, 4, 3-1, 3, x2, 1, 2, and x2.

Nun Danket - Chorale

Musical notation for 'Nun Danket - Chorale', featuring a single staff with a bass clef, a key signature of two flats (Bb, Eb), and a 4/4 time signature. The notation includes a variety of note values and rests.

Rhythm Exercises

Musical notation for Rhythm Exercise 1, featuring a single staff with a bass clef and a key signature of two flats (Bb, Eb). The exercise is divided into two parts: the first part is in 2/4 time and the second part is in 3/4 time.

Musical notation for Rhythm Exercise 2, featuring a single staff with a bass clef and a key signature of two flats (Bb, Eb) in 4/4 time. The exercise consists of eighth notes with various rests.

Musical notation for Rhythm Exercise 3, featuring a single staff with a bass clef and a key signature of two flats (Bb, Eb) in 3/4 time. The exercise consists of eighth notes with triplets indicated by a '3' below the notes.

Musical notation for Rhythm Exercise 4, featuring a single staff with a bass clef and a key signature of two flats (Bb, Eb) in 6/8 time. The exercise consists of eighth notes with various rests.

Musical notation for Rhythm Exercise 5, featuring a single staff with a bass clef and a key signature of two flats (Bb, Eb). The exercise consists of eighth notes with various rests.

Musical notation for Rhythm Exercise 6, featuring a single staff with a bass clef and a key signature of two flats (Bb, Eb) in common time (C). The exercise consists of eighth notes with various rests.

Musical notation for Rhythm Exercise 7, featuring a single staff with a bass clef and a key signature of two flats (Bb, Eb). The exercise consists of eighth notes with various rests.

Musical notation for Rhythm Exercise 8, featuring a single staff with a bass clef and a key signature of two flats (Bb, Eb). The exercise consists of eighth notes with various rests and time signature changes: 4/4, 5/4, 2/4, and 3/4.

Musical notation for Rhythm Exercise 9, featuring a single staff with a bass clef and a key signature of two flats (Bb, Eb) in 9/8 time. The exercise consists of eighth notes with various rests.